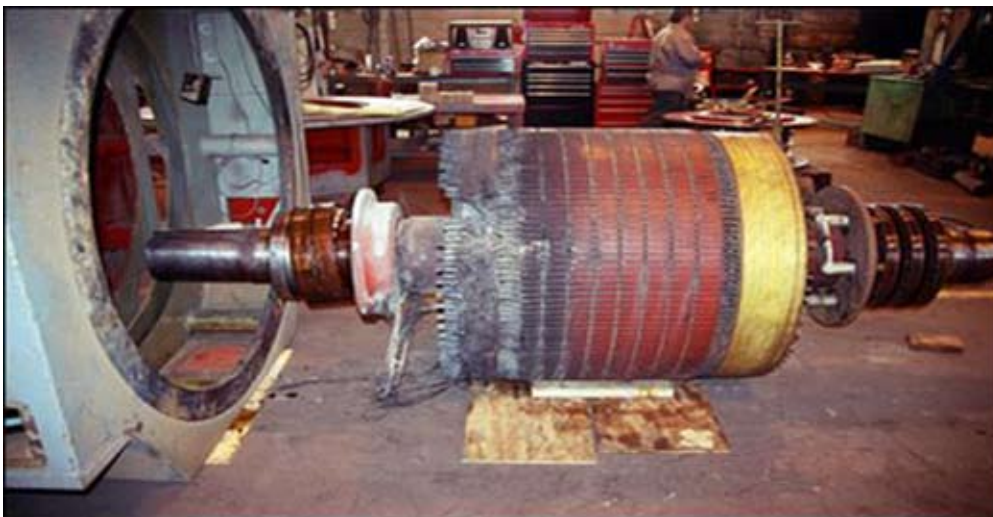


Bruce Swales, Managing Director at Asia-Pacific for LWG Consulting Pte Ltd, a US-headquartered engineering consultancy providing equipment loss consulting and forensic investigation services to the insurance industry. He has over 30 years of engineering experience gained in a wide range of industries, throughout Asia, Australasia and the US.

Bruce is qualified in electronics engineering, computer technology and telecommunication. He has provided technical consulting services on over 1,000 electronic, electrical and mechanical damage claims. His specialist technical fields are semiconductor, telecommunication, power generation & distribution and precision manufacturing. Bruce was involved in several of the world's largest semiconductor industry losses, including Winbond, UICC/UMC and the Taiwan 921 earthquake catastrophe. He also led the contamination/damage assessment for a major passenger ferry fire in Japan ('Diamond Princess'). Recently, Bruce consulted on several tsunami losses in Japan, as a result of the Great Tohoku Earthquake. Bruce has also consulted on many energy losses, including at a 1500MW hydro power station flood catastrophe in India and an LNG plant fire in Malaysia



Topics that Bruce will be touching on during Lunch & Learn Engagement:

- Getting the best out of your technical experts
- Evaluating machinery & equipment damage
- Betterment on technical equipment & machinery claims
- Equipment restoration
- Vehicle accident investigation & reconstruction
- Lightning damage
- Valuing equipment & machinery
- Energy sector losses
- Computer forensics
- Electrical fire investigation
- HVAC claims
- Solving the warranty dilemma
- The energy industry – Overview & challenges
- The semiconductor industry – Overview & challenges

